



The Ultimate  
Driving Machine



# THE 1

SPORTS HATCH PRICE LIST  
LAUNCHING SEPTEMBER 2019

**BMW EFFICIENT DYNAMICS.**  
LESS EMISSIONS. MORE DRIVING PLEASURE.

# CONTENTS.

- Page 1 Contents
- Page 2 The new BMW 1 Series Sports Hatch Introduction
- Page 3 Exterior Equipment Highlights
- Page 4 Interior Equipment Highlights
- Page 5 Model Range – M135i xDrive Highlights
- Page 7 Model Range – M Sport Highlights
- Page 9 Model Range – Sport Highlights
- Page 10 Model Range – SE Highlights
- Page 11 Packages
- Page 15 Technical Information
- Page 16 Pricing Information
- Page 17 BMW ConnectedDrive
- Page 19 BMW EfficientDynamics / Paintwork / Upholstery / Interior Trims / Transmissions
- Page 20 Steering and Chassis / Exterior Equipment / Interior Equipment
- Page 21 Packages
- Page 22 Safety and Technology
- Page 23 Audio and Communication
- Page 24 Light Alloy Wheels
- Page 25 BMW Pay Monthly Servicing & Trackstar
- Page 27 BMW M Performance Accessories
- Page 29 Code Glossary
- Page 30 BMW ConnectedDrive Services

[www.bmw.co.uk/the1](http://www.bmw.co.uk/the1)



Personalise and buy your perfect BMW online. Find out more at [www.bmw.co.uk/online-sales](http://www.bmw.co.uk/online-sales)

# THE NEW BMW 1 SERIES SPORTS HATCH.

Step into a progressive era of driving – the new BMW 1 Series. Perfectly complementing its strong BMW heritage, the striking exterior design, featuring stylish LED headlights, creates a truly youthful feel that extends inside the vehicle. Taking pure driving pleasure to new heights, the new driver-oriented interior features a host of stylish design cues, such as the frameless rear-view mirror, that create a distinctive and exciting ambience throughout the new BMW 1 Series.

You are now more connected than ever before thanks to the new BMW 1 Series. Specifically tailored for greater convenience, the BMW Live Cockpit Professional and Connected Package Professional are available as optional equipment and includes the Intelligent Personal Assistant (standard for M135i xDrive). Through touch, or Voice Control, you can now interact with your BMW in a revolutionary way that has the ability to learn your driving preferences.

Co-pilot to life – the new BMW 1 Series.

## BMW EFFICIENT DYNAMICS.

EfficientDynamics is BMW's award-winning programme of technologies designed to reduce CO<sub>2</sub> emissions and improve fuel economy, without compromising on performance or driving dynamics. These technologies are standard on every new BMW and could lower your fuel and tax costs, as well as ensure a lower benefit in kind tax rating for company car drivers. You can find out more about the benefits of BMW EfficientDynamics, as well as compare your own vehicle against any BMW 1 Series model at [www.bmw.co.uk/EfficientDynamics](http://www.bmw.co.uk/EfficientDynamics)



Brake Energy Regeneration



ECO PRO Mode



Electric Power Steering



BMW EfficientLightweight



Tyres with reduced rolling resistance



High-precision direct injection

**BMW EFFICIENT DYNAMICS.**  
LESS EMISSIONS. MORE DRIVING PLEASURE.



## EXTERIOR.

Throughout the exterior, it is clear that the new BMW 1 Series not only embraces its strong BMW legacy but also proves its presence on the road. Featured as the centre-piece, the interconnected BMW Kidney grille perfectly aligns with the standard LED headlights to provide an invigorating appearance. From the front to the rear, the strikingly sporty design truly defines the new BMW 1 Series.

The design of the standard tilted LED headlights clearly distinguishes the new BMW 1 Series as youthful, thanks to its slender and LED appearance. From the daytime driving lights to the low and high-beam headlights, all of the functions in the LED headlights have a longer lifespan and save more energy. As well as illuminating the road, the LED headlights create a striking and unforgettable design.

New technologies are also available for the exterior. Thanks to the range of optional packages available for the new BMW 1 Series, you can now perfectly tailor any driving needs within your vehicle. Options such as Comfort Access and the Digital key provide innovative, intelligent and convenient solutions. The Digital key allows you to lock and unlock your BMW, and even start the engine, without needing a physical key. It can be downloaded to selected Android smartphones using the BMW Connected App and shared with family and friends.



## INTERIOR.

Pure driving joy continues inside the car. Available with a combination of stylish interior design cues and a generous BMW ConnectedDrive offering, the new BMW 1 Series presents an attractive modern ambience set to keep the senses tingling.

Featured below and exclusively available for the M135i xDrive, the Trigon cloth / Alcantara upholstery is perfectly complemented by the surfaces covered by the Illuminated Boston interior trim. This feature is perfectly combined with the optional Extended lighting (standard for M Sport and M135i xDrive) that allows dynamic light flow throughout the interior.

Available for the first time on the new BMW 1 Series, the new ConnectedDrive offering presents a whole host of technology available as standard. Once you have registered for a free BMW ConnectedDrive account, you are now more connected than ever before. In combination with the optional BMW Live Cockpit Professional (standard for M135i xDrive), by simply saying "Hey BMW" the Intelligent Personal Assistant is activated to support you in a range of situations. The feature allows you to communicate with your vehicle and enables you to know your BMW better. Thanks to its range of comprehensive technology, it truly demonstrates how progressive the new BMW 1 Series can be.



# MODEL RANGE.

The new BMW 1 Series Sports Hatch is available in a variety of engine and model variants, each providing a different level of standard specification. Below highlights some of the equipment differences between them. For further details, please contact your local BMW Retailer.



## M135i xDRIVE HIGHLIGHTS In addition / replacement to M Sport models

- 18" M light alloy Double-spoke style 556 M wheels, Bicolour
- BMW Live Cockpit Professional, comprising:
  - 10.25" Control Display with Touch Function
  - BMW Operating System 7.0
  - Intelligent Personal Assistant
- BMW TwinPower twin-scroll Turbo four-cylinder petrol engine
- Connected Package Professional, comprising:
  - Apple CarPlay® preparation (1 year subscription)
  - Concierge Services
  - Connected Parking
  - Connected Teaser: Microsoft Office 365
  - Real Time Traffic Information
  - Remote Services
- Door sill finishers with M135i designation, front
- Eight-speed Sport automatic transmission with electronic selector-lever
- Exhaust tailpipe, Cerium Grey with bevelled finish
- Kidney grille in Cerium Grey with mesh design
- M aerodynamic bodystyling, including:
  - Front bumper with M135i xDrive exclusive air inlet clasps finished in Cerium Grey (left / right)
  - Rear bumper with independent design in body colour with exclusive Black High-gloss diffuser with mesh design
  - Side sill covers with independent design in body colour with M135i xDrive exclusive Black High-gloss inserts
- M logo designation, side – Cerium Grey
- M rear spoiler
- M Sport seats (front)
- M seat belts
- M Sport braking system
- M Sport steering with M135i xDrive specific settings
- M Sport suspension with M135i xDrive specific settings
- Mirror caps, Cerium Grey
- Trigon cloth / Alcantara Anthracite upholstery
- xDrive intelligent all-wheel drive with M135i specific reinforced components



1 SERIES SPORTS HATCH

RRP from £34,995 inc. VAT

The new BMW M135i xDrive model is shown above in Misano Blue metallic paint. The models shown on these pages may feature optional equipment. Standard equipment may also vary depending on engine variant. Please contact your local BMW Retailer for further details.

# MODEL RANGE.

## M SPORT HIGHLIGHTS In addition / replacement to Sport models

- 18" M light alloy Double-spoke style 819 M wheels
- Dakota leather upholstery with perforation and contrast stitching
- Door sill finishers with M designation, front
- Extended lighting
- Exterior mirrors – electrically folding with anti-dazzle
- Floor mats in Anthracite velour with contrasting colour seam to match contrast stitching on instrument panel
- Gearshift lever with M designation, short-shift (manual transmission only)
- Headlining, Anthracite
- Interior trim, Illuminated Boston
- Kidney grille, Chrome frame with Satin Aluminium struts
- Luggage compartment package
- M aerodynamic bodystyling including:
  - Front bumper with independent design in body colour with Dark Shadow inserts
  - Rear bumper with independent design in body colour with Dark Shadow diffuser
  - Side sill covers with independent design in body colour
- M logo designation, side – Chrome
- M Sport multi-function leather steering wheel with three-spoke design
- M Sport suspension
- Remote control with integrated key, with High-gloss Black inlay and M designation
- Seat heating, front
- Sport seats, front



1 SERIES SPORTS HATCH

RRP from £26,155 inc. VAT

+ £2,800 over SE

# MODEL RANGE.



## SPORT HIGHLIGHTS In addition / replacement to SE models

- 17" light alloy Double-spoke style 549 wheels
- Air conditioning, automatic with two-zone control
- Nivala cloth / Sensatec upholstery with Orange or Grey highlight
- Contrast stitching on instrument panel – to match stitching on seat upholstery
- Door sill finishers with BMW designation, front
- Exclusive Sport exterior features, comprising:
  - Front bumper in body colour with exclusive Sport air inlets finished in High-gloss Black
  - Rear bumper in body colour with exclusive Sport design elements finished in High-gloss Black
- Exterior trim, High-gloss Shadowline, including:
  - Mirror frames, cover panel and base in High-gloss Shadowline
  - Roof trims in body colour
  - Window frame, recess covers, mirror frames and B-pillar / C-pillar embellisher trim in High-gloss Shadowline
- Interior trim, Illuminated Berlin
- Kidney grille, Chrome frame with High-gloss Black struts
- Sport seats, front



1 SERIES SPORTS HATCH

RRP from £24,355 inc. VAT

+ £1,000 over SE

The new BMW 1 Series Sport model is shown above in Mineral White metallic paint.

## SE HIGHLIGHTS

- 16" light alloy Star-spoke style 517 wheels
- Active Guard Plus
- Air conditioning, automatic with one-zone control
- Bluetooth hands-free facility with USB audio interface
- BMW Live Cockpit Plus, comprising:
  - 8.8" Control Display with Touch Function
  - BMW Operating System 6.0
  - iDrive controller with Touch Function
- Connected Package Plus, comprising:
  - Apple CarPlay® preparation
  - Concierge Services
  - Connected Teaser: Microsoft Office 365
  - Real Time Traffic Information
  - Remote Services
- Cruise control with braking function
- Drive Performance Control with ECO PRO and Comfort modes
- Floor mats, velour
- Grid cloth upholstery
- Interior trim, Quartz Silver matt
- LED foglights, front
- LED headlights
- Park Distance Control (PDC), front and rear
- Rain sensor, with automatic headlight activation
- Rear-view mirror, automatically dimming
- Sport multi-function leather steering wheel, three-spoke



1 SERIES SPORTS HATCH

RRP from £23,355 inc. VAT

The new BMW 1 Series SE model is shown above in Black Sapphire metallic paint.

# PACKAGES.

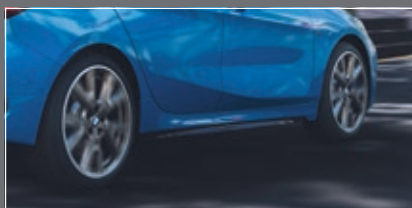
BMW packages in the new BMW 1 Series are designed to create greater convenience, functionality, desire and comfort on any drive. With options ranging from a selection of visually enhancing alloy wheels to the comfort of keyless access, this generous selection of combinations will enhance any journey in your new BMW 1 Series.



## M SPORT PLUS PACK.

£1,800

Enhance your new BMW 1 Series M Sport with the M Sport Plus pack. With this package, you receive a generous selection of visual and performance upgrades to deliver the ultimate BMW experience.



The **M Sports steering** creates a more direct and linear steering ratio for lower steering angle requirement.



The dark-tinted **Sun protection glass** for the rear side windows and rear windscreen prevents the interior from heating up when exposed to direct sunlight.



The **M seat belts** in Black are finished with a coloured M seam and fitted to all five seats.



**18" M light alloy V-spoke style 554 M wheels, Orbit Grey.** Also shown is the **M Sport braking system** which is distinguished by exclusive Blue brake calipers and features the M logo on the front axle calipers.



The **M rear spoiler** emphasises the vehicle's athletic silhouette and reduces unwanted lift. By producing downforce on the rear axle, it provides the vehicle with greater driving stability.

## COMFORT PACK I.

£600

The Comfort pack I, exclusively available for SE and Sport models, combines convenient and innovative functionality with pure comfort. Offering practical storage solutions like the Luggage compartment package which can be utilised for your convenience in the new BMW 1 Series.



The **Luggage compartment package** includes a tensioning strap, frame net in Black, 12V socket, cargo function and a stainless steel loading sill.



**Extended lighting** features numerous LED lights, both inside and outside, for increased convenience and a stylish look. The BMW logo projection, as shown above, is featured on the driver's side only.



The **Exterior mirrors with automatic anti-dazzle** and electric fold-in functions.



The **Seat heating for driver and front passenger** allows for heating of the entire seat base and backrest.

## COMFORT PACK II.

£1,500

With the Comfort pack II you can now access your car with greater ease and keyless entry thanks to the Automatic tailgate and Comfort Access.



The **Steering wheel heating** quickly warms up the rim of the steering wheel at the push of a button, which is especially comfortable in winter.



The **Electric seat adjustment with driver memory** makes it particularly convenient and easy to adjust the driver and front passenger seats.



The **Automatic tailgate** operation enables the convenient opening and closing of the tailgate using the boot button or remote key.



The **Comfort Access** system makes it possible to open all of the vehicle doors and the luggage compartment, without using the key. You can use the BMW Digital Key on a compatible smartphone or the NFC key card for accessing and starting the vehicle.

# PACKAGES.



## M135i PLUS PACK.

£1,500

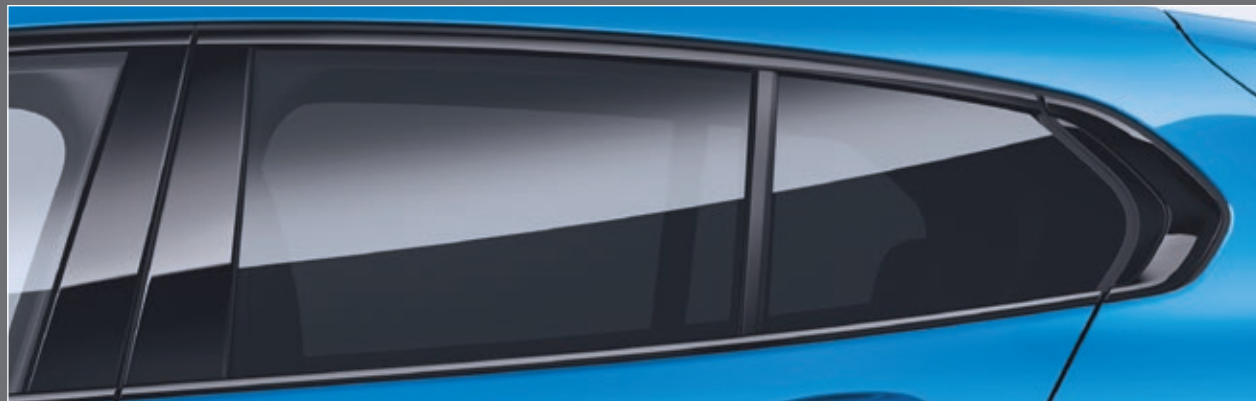
Enhance your new BMW 1 Series M135i xDrive with the M135i Plus pack. This package enhances the vehicle through a selection of visual and performance upgrades to deliver the ultimate BMW experience.



Shown above, **19" M light alloy V-spoke style 557 M wheels, Bicolour** lend a particularly sporty appearance to the M135i xDrive.



The **harman/kardon surround sound system** has a 464W digital amplifier, nine channels, vehicle-specific equaliser and 16 speakers.



The dark-tinted **Sun protection glass** for the rear side windows and rear windscreen prevents the interior from heating up when exposed to direct sunlight.

## TECH PACK I.

£1,500

Offering the latest innovations, the Tech pack I is the perfect companion on any journey. From the ability to charge your phone wirelessly, to the convenience of relevant driving information projected onto the windscreen, this package enhances your driving experience.



**Enhanced Bluetooth with wireless charging** provides a wireless connection of the telephone with the vehicle. **WiFi hotspot preparation** enables connection of mobile devices to the internet via the SIM card installed in the vehicle.



The **Head-up Display** projects information relevant to the journey into the driver's field of vision. The system can display navigation information, speed, warning information, if driver assistance systems are selected, and much more.



**Park Assist** makes parking easier with Parking Assistant, Reversing Assistant, Lateral Parking aid and Reversing Assist camera. The Reversing Assistant saves the last 50 metres of an entry path at a speed of up to approximately 20mph in order to follow this path while reversing.



**BMW Icon Adaptive LED headlights** include additional contents over the standard LED headlights: eight power LEDs for low and high-beam headlights, '4-eye face' with all light functions, adaptive headlights with city, main road and motorway mode and anti-glare high-beam headlights with predictive Adaptive headlights coupled to navigation data.

## TECH PACK II.

£1,500

The Tech pack II offers the latest BMW technology and a host of BMW ConnectedDrive services just for you at a touch of a button.



With the **Connected Package Professional**, a host of services are available from BMW ConnectedDrive including; Concierge Services, Remote Services, Preparation for Apple CarPlay®, Real Time Traffic Information and Remote Services, as well as free additional services to test. **BMW Live Cockpit Professional** includes a high-quality display network consisting of a 10.25" Control Display and a fully digital 10.25" instrument display.



The outstanding **harman/kardon surround sound system** features a 464W digital amplifier, nine channels and 16 speakers. Its extremely harmonious sound perfectly fills the interior space. Fully automatic, speed-dependent equalising precisely compensates for any background driving noise.



# THE NEW 1 SERIES SPORTS HATCH.

## TECHNICAL INFORMATION.

Model	Power output (hp)	0-62mph (secs)	Fuel consumption – combined (mpg / l/100km)*	CO <sub>2</sub> emissions – combined (g/km)*	
				Wheel cluster 1+	Wheel cluster 2+
<b>PETROL</b>					
118i SE	140	8.5 (8.5)	47.1-45.6 (45.6-44.1) / 6.0-6.2 (6.2-6.4)	121 (114)	-
118i Sport	140	8.5 (8.5)	47.1-44.8 (45.6-43.5) / 6.0-6.3 (6.2-6.5)	121 (114)	-
118i M Sport	140	8.5 (8.5)	45.6-42.2 (44.1-40.9) / 6.2-6.7 (6.4-6.9)	121 (114)	123 (116)
M135i xDrive	306	(4.8)	(35.8-34.4) / (7.9-8.2)	(155)	(157)
<b>DIESEL</b>					
116d SE	116	10.3 (10.1)	62.8-60.1 (61.4-58.9) / 4.5-4.7 (4.6-4.8)	100 (100)	-
116d Sport	116	10.3 (10.1)	61.4-58.9 (61.4-57.6) / 4.6-4.8 (4.6-4.9)	100 (100)	-
116d M Sport	116	10.3 (10.1)	60.1-55.4 (58.9-54.3) / 4.7-5.1 (4.8-5.2)	100 (100)	103 (103)
118d SE	150	8.5 (8.4)	60.1-57.6 (57.6-55.4) / 4.7-4.9 (4.9-5.1)	108 (109)	-
118d Sport	150	8.5 (8.4)	60.1-56.5 (57.6-54.3) / 4.7-5.0 (4.9-5.2)	108 (109)	-
118d M Sport	150	8.5 (8.4)	58.9-54.3 (55.4-51.4) / 4.8-5.2 (5.1-5.5)	108 (109)	110 (111)
120d xDrive Sport	190	(7.0)	(53.3-51.4) / (5.3-5.5)	(117)	-
120d xDrive M Sport	190	(7.0)	(52.3-48.7) / (5.4-5.8)	(117)	(119)

## PRICES AND SPECIFICATIONS

BMW (UK) Limited reserves the right to alter prices and specifications without notice. BMW (UK) Limited has made every effort to ensure the accuracy of information but does not accept liability for any errors or omissions.

Key  
 - = Not available \* = Figures are for comparison purposes and may not reflect real life driving results which depend on a number of factors including the accessories fitted (post registration), variations in weather, driving styles and vehicle load. All figures were determined according to a new test (WLTP). The CO<sub>2</sub> figures were translated back to the outgoing test (NEDC) and will be used to calculate vehicle tax on first registration. Only compare fuel consumption and CO<sub>2</sub> figures with other cars tested to the same technical procedure. Figures in () apply to cars with automatic transmission. + = Wheel cluster 1 consists of the following 16" wheel: 1TK, and the following 17" wheels: 25R, 26M, 1UP, and the following 18" wheels: 1L2, 1RL, 1Y2, 1RN. Wheel cluster 2 consists of the following 19" wheels: 1RR, 1Y3.

## PRICING INFORMATION.

Model	Basic price (excluding VAT)	VAT 20%	RRP (including VAT)	On the road price	P11d value		BIK tax rate (2019 / 2020) <sup>1</sup>	VED band <sup>1</sup>	Insurance group
					Manual	Automatic			
<b>PETROL</b>									
118i SE	£19,462.50	£3,892.50	£23,355	£24,430	£24,205	£25,555	28% (26%)	G (G)	TBC
118i Sport	£20,295.83	£4,059.17	£24,355	£25,430	£25,205	£26,555	28% (26%)	G (G)	TBC
118i M Sport	£21,795.83	£4,359.17	£26,155	£27,230	£27,005	£28,355	28% (26%)	G (G)	TBC
M135i xDrive	£29,162.50	£5,832.50	£34,995	£36,430	-	£35,845	(35%)	(I)	TBC
<b>DIESEL</b>									
116d SE <sup>^</sup>	£20,370.83	£4,074.17	£24,445	£25,480	£25,295	£26,645	24% (24%)	E (E)	TBC
116d Sport <sup>^</sup>	£21,204.17	£4,240.83	£25,445	£26,480	£26,295	£27,645	24% (24%)	E (E)	TBC
116d M Sport <sup>^</sup>	£22,704.17	£4,540.83	£27,245	£28,280	£28,095	£29,445	24% (24%)	E (E)	TBC
118d SE	£21,304.17	£4,260.83	£25,565	£26,640	£26,415	£28,015	29% (29%)	F (F)	TBC
118d Sport	£22,137.50	£4,427.50	£26,565	£27,640	£27,415	£29,015	29% (29%)	F (F)	TBC
118d M Sport	£23,637.50	£4,727.50	£28,365	£29,440	£29,215	£30,815	29% (29%)	F (F)	TBC
120d xDrive Sport	£26,129.17	£5,225.83	£31,355	£32,470	-	£32,205	(31%)	(G)	TBC
120d xDrive M Sport	£27,629.17	£5,525.83	£33,155	£34,270	-	£34,005	(31%)	(G)	TBC

## VED RATES

Annual VED (second year onwards) is £450 for cars costing over £40,000 and is payable for five years. VED rates for brand new cars are determined by their CO<sub>2</sub> emissions figure. First year VED applies to the first year of ownership. Annual VED rates apply thereafter. The new BMW 1 Series Sports Hatch models fall into one of the categories listed below:

CO <sub>2</sub> emissions (g/km)	Band E 91-100	Band F 101-110	Band G 111-130	Band I 151-170
First year VED (petrol & RDE2 diesel)	£130	-	£170	£530
First year VED (diesel)	-	£170	£210	-
Annual VED (second year onwards)	£140	£140	£140	£140

Key  
<sup>1</sup> = BIK tax rate and VED band dependent on chosen optional equipment. Figures in () apply to cars with automatic transmission. Insurance group figures refer to 50 Group Rating System.  
<sup>^</sup> = RDE2 Compliant.

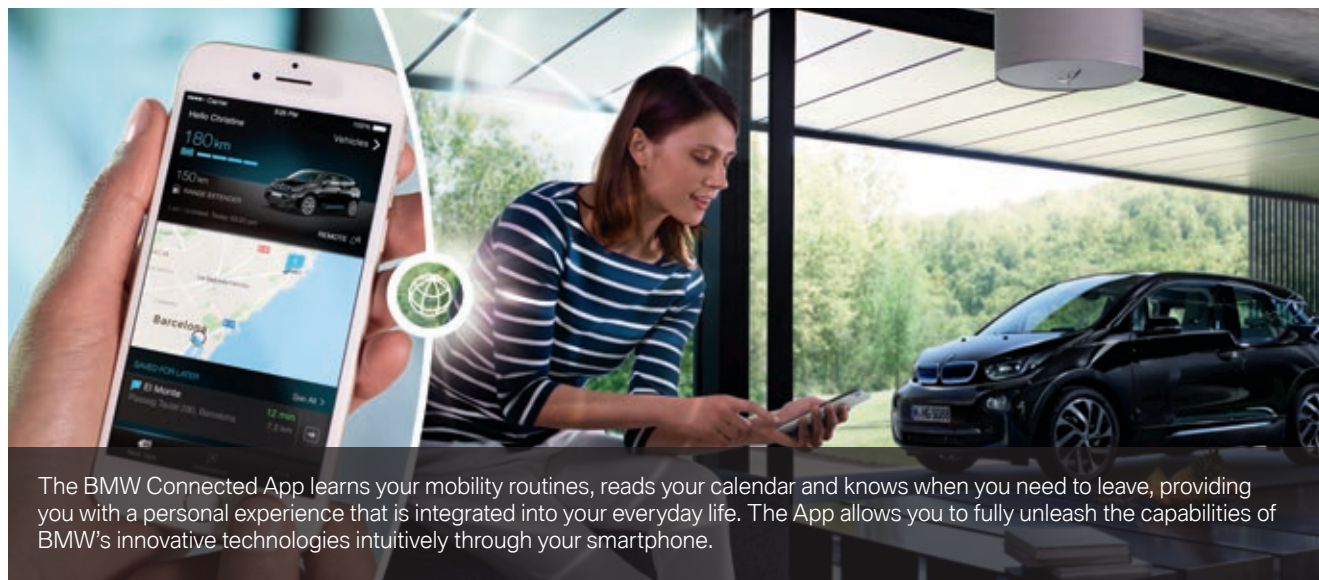
## ON THE ROAD PRICE

The recommended on the road price includes:

Delivery and BMW Emergency Service	£825
Number plates	£25
Vehicle first registration fee	£55
First year Vehicle Excise Duty	See left

# The BMW Connected App.

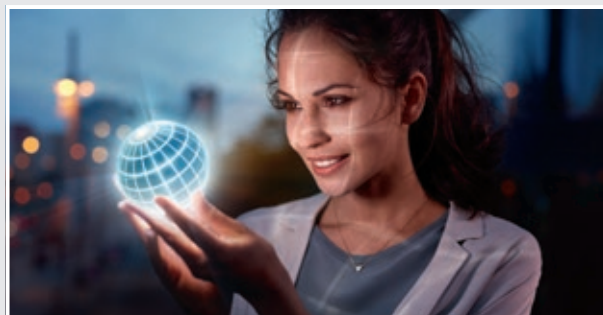
Your personal mobility assistant.



The BMW Connected App learns your mobility routines, reads your calendar and knows when you need to leave, providing you with a personal experience that is integrated into your everyday life. The App allows you to fully unleash the capabilities of BMW's innovative technologies intuitively through your smartphone.

Thanks to BMW ConnectedDrive, you are now more connected than ever before. Providing cutting edge innovations as standard, the new BMW 1 Series comes with a host of connectivity features that enhance and perfectly accompany any journey. The range of services can be seen below:

## AVAILABLE ON THE NEW BMW 1 SERIES.



- **BMW Apps** makes it possible to operate smartphone apps, such as BMW Connected and web radio via the iDrive Controller and Control Display.<sup>1</sup>

- **BMW Connected+** provides the benefit of personalised services at all times.<sup>1,2</sup>

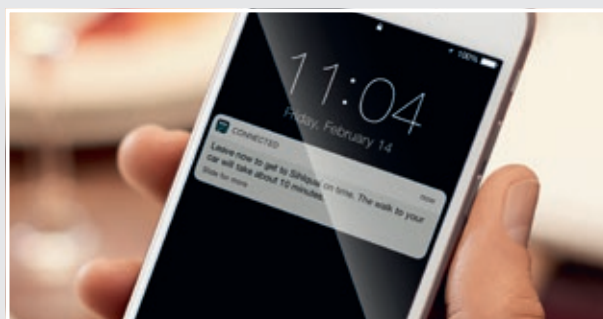
- **BMW Emergency Call** automatically creates a direct link to the local emergency services and sends details of your vehicle location and severity of the accident.<sup>3</sup>

- **BMW Online Services** provides the seamless integration of personalised BMW Connected mobility-related services.

- **BMW TeleServices** sends vehicle-specific service data, supports the processing of servicing appointments. It can also help you request help in the event of a breakdown.<sup>3</sup>

- **Intelligent Voice Control** understands natural speech as well as linguistic varieties and dialects thanks to off-board voice processing.<sup>1</sup>

- **Map Updates** automatically updates the maps in your BMW by downloading Over-the-Air via the on-board sim card or uploaded from a USB.<sup>1</sup>



## ○ BMW LIVE COCKPIT PROFESSIONAL.

(6U3)

Additionally, M135i xDrive models receive the following as standard:



- The **Intelligent Personal Assistant** is a revolutionary way to interact with your BMW and even has the ability to learn driver preferences. Intuitive operation options can be activated through voice command by saying "Hey BMW" or via direct-selection buttons, touch operation on the Control Display or through the optional BMW Gesture Control.<sup>4</sup>

- **Intelligent Functionalities** creates customised rules and learns the driver's habits to enable greater comfort on every journey.<sup>1</sup>

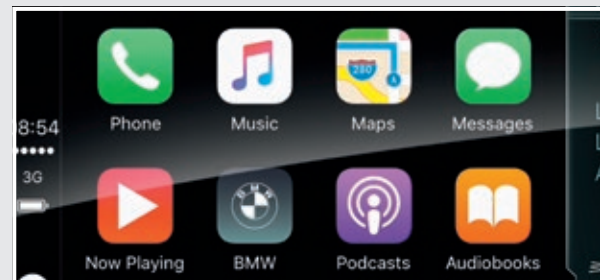
Key  
 ● = Standard ○ = Optional The information above is subject to change. <sup>1</sup> = Available and active for three years. Can be extended or renewed thereafter at an extra cost. <sup>2</sup> = BMW Connected+ is currently only available on SE, Sport and M Sport models equipped with 6U2. Not available for M135i xDrive models. <sup>3</sup> = Available and active for the lifetime of the vehicle. <sup>4</sup> = Available and active for one year. Can be extended or renewed thereafter at an extra cost. <sup>5</sup> = Full functionality dependent on optional equipment selected. <sup>6</sup> = Available and active for three months. Can be extended or renewed thereafter at an extra cost.

# BMW ConnectedDrive.

More connected than ever before.

## ● CONNECTED PACKAGE PLUS.

(6C2)

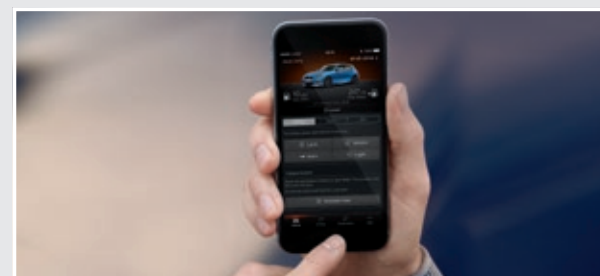


- **Apple CarPlay® preparation** enables wireless usage of your iPhone® in your vehicle via Apple CarPlay® and is operated via the vehicle's user interface.<sup>4</sup>

- **Concierge Services** connects the driver to a BMW Call Centre agent who is available as their around-the-clock personal assistant.<sup>1</sup>

- **Remote Services** allows you to remain connected to your vehicle wherever you are, send destinations, find your vehicle as well as locking and unlocking your doors.<sup>1</sup>

- **Real Time Traffic Information** supplies details about the location and duration of delays, also includes Hazard Preview.<sup>1</sup>



- **Connected Teaser** offers a three month trial of **Microsoft Office 365**.<sup>6</sup>

## ○ CONNECTED PACKAGE PROFESSIONAL.

(6C4)

In addition to Connected Package Plus, M135i xDrive models receive the following as standard:



- **Connected Navigation** makes route planning easier, anticipates road conditions and provides estimated time of arrival, plus multiple map views with split screen options.<sup>1</sup>

- And thanks to **In-Car Experiences**, your BMW will take care of you and adapt the interior ambience to suit your mood.<sup>5</sup>

- **Connected Parking** offers multi-storey and on-street parking availability in selected cities throughout the UK and other parts of Europe.



- **Connected Teaser** offers a three month trial of **Microsoft Office 365**.<sup>6</sup>

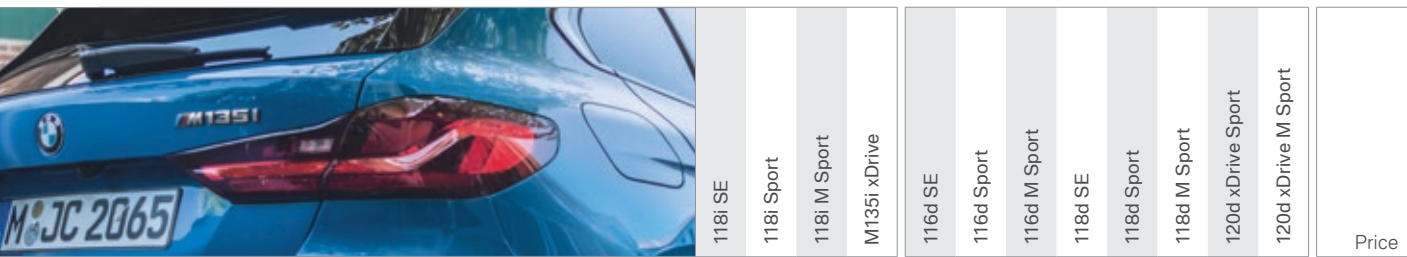
## CONNECTED TEASER.

An exclusive three month trial tailored to whichever BMW 1 Series model you choose.



**Microsoft Office 365** synchronises emails, contacts and calendar entries and enables their processing in the vehicle, plus Skype for Business calls can be joined with just one click.<sup>6</sup>

# STANDARD AND OPTIONAL EQUIPMENT.



## BMW EFFICIENT DYNAMICS

	118i SE	118i Sport	118i M Sport	M135i xDrive	116d SE	116d Sport	116d M Sport	118d SE	118d Sport	118d M Sport	120d xDrive Sport	120d xDrive M Sport	Price
Active Air Stream Kidney Grille	●	●	●	●	●	●	●	●	●	●	●	●	Std
Brake Energy Regeneration	●	●	●	●	●	●	●	●	●	●	●	●	Std
ECO PRO mode	●	●	●	●	●	●	●	●	●	●	●	●	Std
Electric Power Steering (EPS) with Servotronic	●	●	●	●	●	●	●	●	●	●	●	●	Std
High-precision direct injection	●	●	●	●	-	-	-	-	-	-	-	-	Std

Certain BMW EfficientDynamics features may be excluded depending on the optional equipment chosen. For full details please contact your local BMW Retailer.

## PAINTWORK

	uni	met	ind	118i SE	118i Sport	118i M Sport	M135i xDrive	116d SE	116d Sport	116d M Sport	118d SE	118d Sport	118d M Sport	120d xDrive Sport	120d xDrive M Sport	Price
Non-metallic Available in Alpine White or Jet Black <sup>1</sup>	●	●	●	●	●	●	●	●	●	●	●	●	●	●	●	Std
Metallic Available in Black Sapphire, Glacier Silver <sup>1</sup> , Mediterranean Blue <sup>1</sup> , Melbourne Red, Mineral Grey, Mineral White <sup>1</sup> , Misano Blue <sup>2</sup> or Seaside Blue <sup>1</sup>	○	○	○	○	○	○	○	○	○	○	○	○	○	○	○	£560
BMW Individual Available in Storm Bay metallic	-	-	○	○	-	-	○	-	-	○	-	-	○	-	○	£560

## UPHOLSTERY

	EG	KF	PD	HL	118i SE	118i Sport	118i M Sport	M135i xDrive	116d SE	116d Sport	116d M Sport	118d SE	118d Sport	118d M Sport	120d xDrive Sport	120d xDrive M Sport	Price
Grid cloth Available in Anthracite	●	-	-	-	●	-	-	-	●	-	-	-	-	-	-	-	Std
Nivala cloth / Sensatec Available in Anthracite with Grey highlight or Anthracite with Orange highlight	-	●	-	-	-	●	-	-	-	●	-	-	●	-	●	-	Std
Dakota leather with perforations - SE models Available in Black with Grey highlight	○	-	-	-	○	-	-	○	-	-	-	-	-	-	-	-	£1,150
- Sport models Available in Black with Grey highlight or Magma Red with Grey highlight	-	○	-	-	-	○	-	-	○	-	○	-	○	-	-	-	£1,150
- M Sport models Available in Black with Blue highlight, Black with Grey highlight or Magma Red with Grey highlight	-	-	●	-	-	-	●	-	-	●	-	-	●	-	●	-	Std
- M135i xDrive models Available in Black with Grey highlight or Magma Red with Grey highlight	-	-	-	○	-	-	-	-	-	-	-	-	-	-	-	-	£800
Trigon cloth / Alcantara Anthracite	-	-	-	●	-	-	-	-	-	-	-	-	-	-	-	-	Std

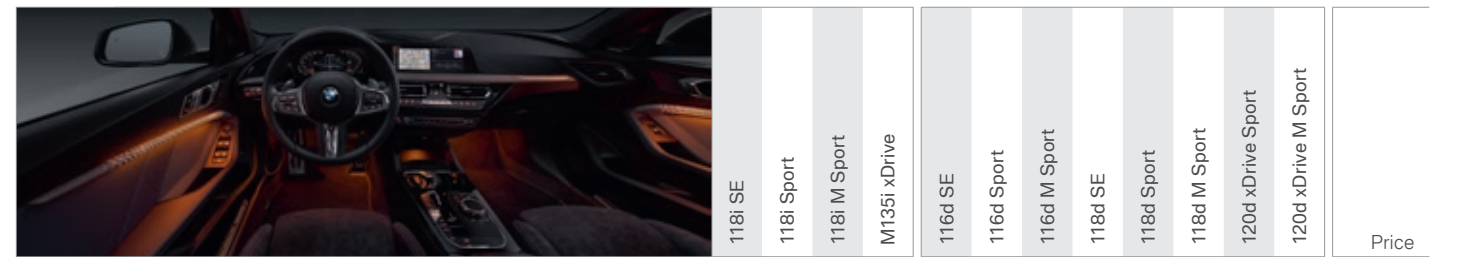
## INTERIOR TRIMS

	4P3	4P2	4GN	118i SE	118i Sport	118i M Sport	M135i xDrive	116d SE	116d Sport	116d M Sport	118d SE	118d Sport	118d M Sport	120d xDrive Sport	120d xDrive M Sport	Price
Illuminated Berlin	-	●	○	○	-	●	○	●	○	○	○	○	○	○	○	Std
Illuminated Boston	-	-	●	●	-	-	●	-	-	●	-	-	●	-	●	Std
Quartz Silver <sup>3</sup>	●	-	-	-	●	-	-	-	-	-	-	-	-	-	-	Std

## TRANSMISSIONS

	2TF	2TB	118i SE	118i Sport	118i M Sport	M135i xDrive	116d SE	116d Sport	116d M Sport	118d SE	118d Sport	118d M Sport	120d xDrive Sport	120d xDrive M Sport	Price
Dual-clutch automatic transmission	○	○	○	-	○	○	○	○	○	○	○	○	○	○	£1,350
Sport automatic transmission with gearshift paddles	-	-	-	●	-	-	-	○	○	○	○	○	○	○	£1,600

Key  
 ● = Standard ○ = Optional - = Not available <sup>1</sup> = Exclusively available on SE and Sport models. <sup>2</sup> = Exclusively available on M Sport and M135i xDrive models. <sup>3</sup> = Please note this interior trim is not backlit.



## STEERING AND CHASSIS

	118i SE	118i Sport	118i M Sport	M135i xDrive	116d SE	116d Sport	116d M Sport	118d SE	118d Sport	118d M Sport	120d xDrive Sport	120d xDrive M Sport	Price
Adaptive suspension Not with 19" alloy wheels	-	-	-	○	-	-	-	-	-	○	-	○	£500
M Sport braking system Included in ZMS Only with 1RN / 1RR / 1Y3 alloy wheels	2NH	-	-	○	●	-	○	-	-	○	-	○	n/a <sup>1</sup>
M Sport suspension	704	-	-	●	-	-	●	-	-	●	-	●	Std
Performance control	2VG	●	●	●	●	●	●	●	●	●	●	●	Std
Space-saver spare wheel <sup>2</sup>	300	○	○	○	○	○	○	○	○	○	○	○	£150


## EXTERIOR EQUIPMENT

	118i SE	118i Sport	118i M Sport	M135i xDrive	116d SE	116d Sport	116d M Sport	118d SE	118d Sport	118d M Sport	120d xDrive Sport	120d xDrive M Sport	Price
Comfort Access <sup>3</sup> Included in ZF2	322	○	○	○	○	○	○	○	○	○	○	○	£500
Exterior trim, High-gloss Shadowline	760	-	●	●	●	-	●	●	●	●	●	●	Std
Tailgate operation, powered Included in ZF2	316	○	○	○	○	○	○	○	○	○	○	○	£500
Towbar, detachable	235	○	○	○	-	-	-	-	-	-	-	-	n/a*
		○	○	○	○	○	○	○	○	○	○	○	£750

## INTERIOR EQUIPMENT

	118i SE	118i Sport	118i M Sport	M135i xDrive	116d SE	116d Sport	116d M Sport	118d SE	118d Sport	118d M Sport	120d xDrive Sport	120d xDrive M Sport	Price
Air conditioning, automatic with two-zone control	534	-	●	●	●	-	●	●	●	●	●	●	Std
Extended storage	493	●	●	●	●	●	●	●	●	●	●	●	Std
Headlining, Anthracite	775	-	-	●	●	-	-	●	-	●	-	●	Std
Luggage compartment package Included in ZF1	418	○	○	●	●	○	○	○	○	○	○	○	n/a*
Luggage compartment separating net Only with 418	413	○	○	○	○	○	○	○	○	○	○	○	£150
Lumbar support, driver and front passenger	488	○	○	○	○	○	○	○	○	○	○	○	£150
M Sport steering wheel	710	-	-	●	●	-	-	●	-	●	-	●	Std
M Sport seats	711	-	-	-	●	-	-	-	-	-	-	-	Std
Multi-function controls for steering wheel	249	●	●	●	●	●	●	●	●	●	●	●	Std
Panoramic glass sunroof	402	○	○	○	○	○	○	○	○	○	○	○	£1,000
Rear-view mirror, automatically dimming	431	●	●	●	●	●	●	●	●	●	●	●	Std
Seat adjustment - front, electric with driver memory Included in ZF2	459	○	○	○	○	○	○	○	○	○	○	○	£750
Seat heating, front Included in ZF1	494	○	○	●	●	○	○	○	○	○	○	○	n/a*
Sport seats, front	481	-	●	●	-	-	●	●	-	●	-	●	Std
Steering wheel heating Included with ZF2	248	○	○	○	○	○	○	○	○	○	○	○	£150
Through-loading system	465	○	○	○	○	○	○	○	○	○	○	○	n/a*
Sun protection glass Included in ZMS	420	-	-	○	-	-	○	-	-	○	-	○	£300
Sport leather steering wheel, three-spoke	255	●	●	-	-	-	-	●	-	●	-	●	Std

Key  
 ● = Standard ○ = Optional - = Not available Only with = these options must be ordered together. Not with = these options are not available for ordering together.  
 \* = Exclusively available as part of a package, see page 21 for package information. <sup>1</sup> = Only available with selected alloy wheels. <sup>2</sup> = Space-saver spare wheel loses underfloor storage in boot and therefore reduces boot volume. <sup>3</sup> = Digital key valid for one year.



	118i SE	118i Sport	118i M Sport	M135i xDrive	116d SE	116d Sport	116d M Sport	118d SE	118d Sport	118d M Sport	120d xDrive Sport	120d xDrive M Sport	Price
--	---------	------------	--------------	--------------	---------	------------	--------------	---------	------------	--------------	-------------------	---------------------	-------

Packages provide an intelligent selection of individual options at a lower combined price, as well as contributing to the resale value of the vehicle. Further options can still be specified even when a package is chosen.

<b>COMFORT PACK I</b>	ZF1	o	o	-	-	o	o	-	o	o	-	o	-	£600
Comprises:														
- 418 Luggage compartment package														
- 430 Exterior mirrors – electrically folding with anti-dazzle														
- 494 Seat heating, front														
- 563 Extended lighting														
<b>COMFORT PACK II</b>	ZF2	o	o	o	o	o	o	o	o	o	o	o	o	£1,500
Comprises:														
- 248 Steering wheel heating														
- 316 Automatic tailgate														
- 322 Comfort Access														
- 459 Seat adjustment – front, electric with driver memory														
<b>TECH PACK I</b>	ZT1	o	o	o	o	o	o	o	o	o	o	o	o	£1,500
Comprises:														
- 552 BMW Icon Adaptive LED Headlights														
- 5AC High-beam Assistant														
- 5DM Park Assist including Reversing Assist camera														
- 610 Head-up Display														
- 6NW Enhanced Bluetooth with wireless charging														
- 6WD WiFi hotspot preparation														
<b>TECH PACK II</b>	ZT2	o	o	o	-	o	o	o	o	o	o	o	o	£1,500
Comprises:														
- 688 Loudspeaker system – harman/kardon														
- 6C4 BMW Connected Package Professional														
- 6U3 BMW Live Cockpit Professional														
<b>M SPORT PLUS PACK</b>	ZMS	-	-	o	-	-	o	-	-	o	-	o	o	£1,800
Comprises:														
- 1Y2 18" M V-spoke style 554 M wheels, Orbit Grey														
- 2NH M Sport braking system														
- 2VE M Sport steering														
- 420 Sun protection glass														
- 4GQ M seat belts														
- 754 M rear spoiler														
<b>M135I PLUS PACK</b>	ZMA	-	-	-	o	-	-	-	-	-	-	-	-	£1,500
Comprises:														
- 1Y3 19" M V-spoke style 557 M wheels, Bicolour														
- 420 Sun protection glass														
- 688 Loudspeaker system – harman/kardon														



	118i SE	118i Sport	118i M Sport	M135i xDrive	116d SE	116d Sport	116d M Sport	118d SE	118d Sport	118d M Sport	120d xDrive Sport	120d xDrive M Sport	Price
--	---------	------------	--------------	--------------	---------	------------	--------------	---------	------------	--------------	-------------------	---------------------	-------

**SAFETY AND TECHNOLOGY**

Active Cruise Control with 'Stop & Go' function Only with 2TB / 2TF	5DF	o	o	o	o	o	o	o	o	o	o	o	o	n/a <sup>1</sup>
Active Guard Plus Comprises: - Front Collision Warning with brake intervention - Lane Departure Warning - Speed Limit Assist	5AQ	●	●	●	●	●	●	●	●	●	●	●	●	Std
BMW Icon Adaptive LED Headlights Included in ZT1	552	o	o	o	o	o	o	o	o	o	o	o	o	£500
Cruise control with braking function	544	●	●	●	●	●	●	●	●	●	●	●	●	Std
Driving Assistant Comprises: - Active Cruise Control with 'Stop & Go' function - Approach Control and Pedestrian Warning with City Braking function - Lane Departure Warning with Blind Spot Detection - Rear Collision Prevention - Rear Crossing-traffic Warning Only with 2TB / 2TF + 430	5AS	o	o	o	o	o	o	o	o	o	o	o	o	£1,000
Head-up Display Included in ZT1	610	o	o	o	o	o	o	o	o	o	o	o	o	£750
High-beam Assistant Only with 552	5AC	o	o	o	o	o	o	o	o	o	o	o	o	n/a*
Larger fuel tank (50 litres)	1AG	o	o	o	●	o	o	o	o	o	o	o	o	£50
LED foglights, front	5A1	●	●	●	-	●	●	●	●	●	●	●	●	Std
LED headlights	5A2	●	●	●	●	●	●	●	●	●	●	●	●	Std
Park Distance Control (PDC), front and rear	508	●	●	●	●	●	●	●	●	●	●	●	●	Std
Park Assist Comprises: - Parking Assistant - Reversing Assistant - Lateral Parking aid - Reversing Assist camera Included in ZT1	5DM	o	o	o	o	o	o	o	o	o	o	o	o	£350
Rain sensor with automatic headlight activation	521	●	●	●	●	●	●	●	●	●	●	●	●	Std

Key  
● = Standard o = Optional - = Not available / = Indicates 'or'  
● = Standard o = Optional - = Not available

Key  
● = Standard o = Optional - = Not available / = Indicates 'or' Only with = these options must be ordered together. \* = Exclusively available as part of a package, see page 21 for package information. <sup>1</sup> = Included within 5AS, Driving Assistant. <sup>2</sup> = Included within 552, BMW Adaptive Icon LED Headlights.



AUDIO AND COMMUNICATION

		118i SE	118i Sport	118i M Sport	M135i xDrive	116d SE	116d Sport	116d M Sport	118d SE	118d Sport	118d M Sport	120d xDrive Sport	120d xDrive M Sport	Price
BMW Emergency Call <sup>1</sup>	6AF	●	●	●	●	●	●	●	●	●	●	●	●	Std
BMW Gesture Control	6U8	○	○	○	○	○	○	○	○	○	○	○	○	£300
BMW Live Cockpit Plus	6U2	●	●	●	-	●	●	●	●	●	●	●	●	Std
Comprises:														
- 8.8" Touch Display														
- BMW Connected+ <sup>2,3</sup>														
- BMW Navigation system														
- BMW Operating System 6.0														
- BMW TeleServices <sup>1</sup>														
- iDrive controller with Touch Function														
- Intelligent Voice Control <sup>3</sup>														
- Over the Air Map updates <sup>3</sup>														
- USB Map updates <sup>3</sup>														
Further information can be found on pages 17-18														
BMW Live Cockpit Professional	6U3	○	○	○	-	○	○	○	○	○	○	○	○	£1,000
Comprises the full functionality of BMW Live Cockpit Plus (6U2) <sup>4</sup> , plus:		○	○	○	-	○	○	○	○	○	○	○	○	n/a*
- 10.25" Touch Display		-	-	-	●	-	-	-	-	-	-	-	-	Std
- BMW Operating System 7.0														
- Intelligent Functionalities <sup>2,3</sup>														
- Intelligent Personal Assistant														
Further information can be found on 17-18														
Included in ZT2														
BMW Online Services <sup>2,3</sup>	6AK	●	●	●	●	●	●	●	●	●	●	●	●	Std
BMW TeleServices <sup>1</sup>	6AE	●	●	●	●	●	●	●	●	●	●	●	●	Std
Connected Package Plus	6C2	●	●	●	-	●	●	●	●	●	●	●	●	Std
Comprises:														
- Apple CarPlay <sup>2,5,6</sup>														
- Concierge Services <sup>2,3</sup>														
- Connected Office <sup>8</sup>														
- Real Time Traffic Information <sup>2,3</sup>														
- Remote Services <sup>3</sup>														
Further information can be found on pages 17-18														
Connected Package Professional	6C4	-	-	-	●	-	-	-	-	-	-	-	-	Std
Comprises the full functionality of Connected Package Plus (6C2), plus:		○	○	○	-	○	○	○	○	○	○	○	○	n/a*
- Connected Navigation <sup>2,3</sup>														
- Connected Parking <sup>2,3</sup>														
- Connected Teaser <sup>7,8</sup>														
Further information can be found on 17-18														
Included in ZT2														
DAB tuner	654	●	●	●	●	●	●	●	●	●	●	●	●	Std
Enhanced Bluetooth with wireless charging	6NW	○	○	○	○	○	○	○	○	○	○	○	○	£350
Included in ZT1		○	○	○	○	○	○	○	○	○	○	○	○	n/a <sup>1</sup>
Only with 6WD														
Loudspeaker system – harman/kardon	688	-	-	-	○	-	-	-	-	-	-	-	-	£750
Included in ZT2 / ZMA		○	○	○	○	○	○	○	○	○	○	○	○	n/a <sup>1</sup>
Only with 6U3														
WiFi hotspot preparation	6WD	○	○	○	○	○	○	○	○	○	○	○	○	£0
Only with 6NW														

Key  
 ● = Standard ○ = Optional - = Not available Only with = these options must be ordered together. \* = Exclusively available as part of a package, see page 21 for package information. <sup>1</sup> = Active and available for the lifetime of the vehicle. <sup>2</sup> = Requires a free BMW ConnectedDrive account. <sup>3</sup> = Active for 3 years, renewable thereafter at an additional cost. <sup>4</sup> = BMW Connected+ is currently only available on vehicles equipped with 6U2, BMW Live Cockpit Plus. <sup>5</sup> = Available and active for one year, can be extended or renewed thereafter at an additional cost. <sup>6</sup> = Functions using a data connection will use data from the SIM card in the iPhone®. Additional data charges may be applied by the mobile network provider. Compatibility and functions may vary due to the model year of the iPhone® and the version of software installed on it. <sup>7</sup> = Includes Connected Music, Microsoft Office 365 and In-Car Experiences. For further details please refer to pages 17-18. <sup>8</sup> = Available and active for three months. Can be extended or renewed thereafter at an extra cost.



LIGHT ALLOY WHEELS

		118i SE	118i Sport	118i M Sport	M135i xDrive	116d SE	116d Sport	116d M Sport	118d SE	118d Sport	118d M Sport	120d xDrive Sport	120d xDrive M Sport	Price
16" Star-spoke style 517, Ferric Grey	1TK	●	-	-	-	●	-	-	-	-	-	-	-	Std
17" Multi-spoke style 546	25R	○	-	-	-	○	-	-	-	-	-	-	-	£495
17" Double-spoke style 549, Orbit Grey	26M	-	●	-	-	-	●	-	-	●	-	-	-	Std
17" Double-spoke style 548, Bicolour Orbit Grey	1UP	-	○	-	-	-	○	-	-	○	-	-	-	£175
18" Multi-spoke style 488 Bicolour Orbit Grey	1L2	-	○	-	-	-	○	-	-	○	-	-	-	£595
18" M Double-spoke style 819 M, Orbit Grey	1RL	-	-	●	-	-	●	-	-	●	-	●	-	Std
18" M V-spoke style 554 M, Orbit Grey	1Y2	-	-	○	-	-	○	-	-	○	-	○	-	n/a*
Only with ZMS														
18" M Double-spoke style 556 M, Bicolour Cerium Grey Matt	1RN	-	-	-	●	-	-	-	-	-	-	-	-	Std
19" M Double-spoke style 552 M, Bicolour Jet Black	1RR	-	-	○	-	-	○	-	-	○	-	○	-	£595
19" M V-spoke style 557 M, Bicolour Cerium Grey Matt	1Y3	-	-	-	○	-	-	-	-	-	-	-	-	n/a*
Only with ZMA														



16" Star-spoke style 517, Ferric Grey | 17" Multi-spoke style 546 | 17" Double-spoke style 549, Orbit Grey | 17" Double-spoke style 548, Bicolour Orbit Grey | 18" Multi-spoke style 488 Bicolour Orbit Grey | 18" M Double-spoke style 819 M, Orbit Grey | 18" M V-spoke style 554 M, Orbit Grey | 18" M Double-spoke style 556 M, Bicolour Cerium Grey Matt | 19" M Double-spoke style 552 M, Bicolour Jet Black | 19" M V-spoke style 557 M, Bicolour Cerium Grey Matt

Key  
 ● = Standard ○ = Optional - = Not available \* = Exclusively available as part of a package, see page 21 for package information. Only with = these options must be ordered together. Content correct at time of going to print. Prices subject to change.

# BMW PAY MONTHLY SERVICING & TRACKSTAR.

## SERVICING MADE SIMPLE.

Planning for the road ahead has never been easier. With the BMW Pay Monthly Service Plan<sup>1</sup> you can remove the uncertainty often associated with car servicing costs by spreading them monthly, much like you would your household bills. Our Pay Monthly service plan covers two services and any unused credit can be transferred to another BMW if you decide to switch unexpectedly. As part of the Pay Monthly plan you will also receive a number of added extras including:

- Fluid top ups
- An MOT
- A Wash & Vac each time you visit
- Seasonal health checks
- Free Sat Nav Map updates

Get the quality service and parts you expect from BMW with a fixed monthly payment. Give your BMW the care and attention it deserves from the experts that made it.

**Price: £20 per month for 36 months**

Please contact your preferred BMW Centre for further information.

## BMW TRACKSTAR.

Locate and recover your vehicle if it is stolen with BMW Trackstar or BMW Trackstar Advance. Benefits include:

- 24/7 Trackstar Monitoring Centre
- Thatcham accredited
- Integrated motion sensor
- Pan-European protection

**BMW Trackstar price from: £399<sup>2</sup>**

**BMW Trackstar Advance price from: £649<sup>2</sup>**



<sup>1</sup> = Participating Retailers only. Two services must be claimed within four years or 40,000 miles, whichever occurs soonest. <sup>2</sup> = Price excludes subscription. Please consult your preferred BMW Centre for further details. Content correct at time of going to print. Prices subject to change.

# BMW M PERFORMANCE ACCESSORIES.



The new BMW 1 Series' distinctive character and outstanding agility ensures an unmistakable sporty driving experience. The extensive range of M Performance accessories allow the car's sporty appearance and dynamic potential to be given an additional boost.

The new high-quality Carbon Fibre components are crafted elaborately by hand before being sealed with a clear finish and given a High-gloss polish.



Carbon Rear Diffuser, Rear Spoiler, Side Skirt attachment and M Performance 19" alloy shown here.

The front splitter and aero flicks in High-gloss Black optimise the aerodynamics.



The rear throughflow spoiler enhances the sporty appearance. Available in PU High-gloss Black (can be painted).



A new range of carbon accessories available, including mirror covers.



A range of M Performance Accessories will also be available for the interior, including M Performance Steering Wheel with distinctive Alcantara grip.



## CODE GLOSSARY.

1AG	Larger fuel tank (50 litres)	493	Extended storage	6C2	Connected Package Plus
223	Adaptive suspension	494	Seat heating, front	6C4	Connected Package Professional
235	Towbar, detachable	4GN	Interior trim, Quartz Silver	6NW	Enhanced Bluetooth with wireless charging
248	Steering wheel heating	4GQ	M seat belts	6U2	BMW Live Cockpit Plus
249	Multi-function controls for steering wheel	4P2	Interior trim, Illuminated Boston	6U3	BMW Live Cockpit Professional
255	Sport leather steering wheel, three-spoke	4P3	Interior trim, Illuminated Berlin	6U8	BMW Gesture Control
2NH	M Sport braking system	508	Park Distance Control (PDC), front and rear	6WD	WiFi Hotspot preparation
2TB	Sport automatic transmission	521	Rain sensor with automatic headlight activation	704	M Sport suspension
2TF	Dual-clutch automatic transmission	534	Air conditioning, automatic with two-zone control	710	M Sport steering wheel
2VE	M Sport steering	544	Cruise control with braking function	711	M Sport seats
2VG	Performance control	552	BMW Icon Adaptive LED Headlights	754	M rear spoiler
300	Space-saver spare wheel	563	Extended lighting	760	Exterior trim, High-gloss Shadowline
316	Tailgate operation, powered	5A1	LED foglights, front	775	Headlining, Anthracite
322	Comfort Access	5A2	LED headlights	EG	Grid cloth upholstery
402	Panoramic glass sunroof	5AC	High-beam Assistant	HL	Trigon cloth / Alcantara Anthracite upholstery
413	Luggage compartment separating net	5AQ	Active Guard Plus	KF	Nivala cloth / Sensatec upholstery
418	Luggage compartment package	5AS	Driving Assistant	PD	Dakota leather upholstery
420	Sun protection glass	5DF	Active Cruise Control with 'Stop & Go' function	Ind	BMW Individual paintwork
430	Exterior mirrors – folding, with anti-dazzle	5DM	Park Assist	met	Metallic paintwork
431	Rear-view mirror, automatically dimming	610	Head-up Display	uni	Non-metallic paintwork
459	Seat adjustment – front, electric with driver memory	654	DAB digital radio	ZF1	Comfort pack I
465	Through-loading system	688	Loudspeaker system – harman/kardon	ZF2	Comfort pack II
481	Sports seats, front	6AE	BMW TeleServices	ZMA	M135i Plus pack
488	Lumbar support, driver and front passenger	6AF	BMW Emergency Call	ZMS	M Sport Plus pack
		6AK	BMW Online Services	ZT1	Tech pack I
				ZT2	Tech pack II

## BMW CONNECTED DRIVE SERVICES.

BMW ConnectedDrive keeps driver and vehicle connected with the outside world. Digital services, driver-focused technologies and driver assistance systems provide more comfort, more entertainment and more safety. Increase your driving pleasure – with BMW ConnectedDrive.

For further information on BMW ConnectedDrive and the General Terms and Conditions of Service for ConnectedDrive, please see: [www.bmw.co.uk/connecteddrive-information](http://www.bmw.co.uk/connecteddrive-information)

The BMW ConnectedDrive Hotline is available on: +44 (0) 800 561 0555 from Monday to Friday 8am – 7pm and Saturday to Sunday 9am – 5pm.



## GENERAL INFORMATION

BMW (UK) Ltd, Summit ONE, Summit Avenue, Farnborough, Hampshire, GU14 0FB (hereinafter referred to as "BMW") provides the customer with certain vehicle-related information and assistance functions (hereinafter called "Services") under the name of "BMW ConnectedDrive". BMW collects, stores or processes car-related data in compliance with applicable law and only to the extent necessary to provide the Services. BMW does not collect, store or process personal data in course of the Services – except where this is explicitly stated in the following description of the individual Services. In the case of Services that require personal data to be collected, stored and processed so that such Services can actually be provided, BMW informs customers of this in advance by providing this data protection notice. The Services are provided by means of a SIM card installed in the vehicle.

## CONNECTED DRIVE SERVICES DURATION

Microsoft Office 365	3 month trial
Apple CarPlay® Preparation	1 year
Apps	3 years
BMW Connected+	3 years
BMW Online Services	3 years
Concierge Services	3 years
Connected Parking	3 years
Intelligent Voice Control	3 years
Intelligent Functionalities	3 years
Map Updates	3 years
Real Time Traffic Information	3 years
Remote Services	3 years
BMW Emergency Call	Active for the lifetime of the vehicle
BMW TeleServices	Active for the lifetime of the vehicle
Legal Emergency Call	Active for the lifetime of the vehicle.

## DEACTIVATION

The customer may have the BMW ConnectedDrive Services "TeleServices" (6AE) and "BMW Emergency Call" (6AC) deactivated at any time at an authorised BMW Centre, a regional BMW branch or an authorised BMW workshop. Deactivation of this Service will also deactivate the SIM card installed in the vehicle. **This results in the Emergency Call in the vehicle also not functioning.** The other Services can also be deactivated by the customer (from August 2014) via the BMW ConnectedDrive Customer Portal ("My BMW ConnectedDrive").





**The Ultimate  
Driving Machine**

More about BMW  
Tel. 0800 325 600  
[www.bmw.co.uk](http://www.bmw.co.uk)



BMW UK on Facebook  
[www.facebook.com/bmwuk](http://www.facebook.com/bmwuk)

Valid from June 2019.